





FISHING

AN ANCIENT ACTIVITY WITH A FUTURE

Joaquim Simplício

WORLD FISHING FLEET

(1998 FAO SOURCE)

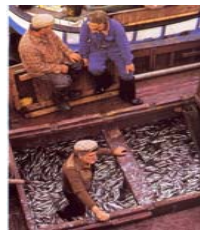
4.1 MILLION FISHING VESSELS

- 1.3 MILLION DECKED VESSELS**
- 2.8 MILLION UNDECKED VESSELS**



LABOUR

- **35 MILLION ENGAGED IN FISHING AND FISH FARMING**
- **28 MILLION ENGAGED IN FISHING**



CLASSES OF FISHING VESSELS

FISHING GEAR

- TRAPS
- LINES
- NETS



CLASSES OF FISHING VESSELS

TRAPS

- TRAP SETTER



CLASSES OF FISHING VESSELS

LINES

- LONGLINER
- TROLLER



CLASSES OF FISHING VESSELS

NETS

- DREDGER
- SEINER
- TRAWLER
 - BEAM TRAWLER
 - STERN TRAWLER



SEINER



TRAWLER

BEAM TRAWLER



STERN TRAWLER



CLASSES OF FISHING VESSELS

OPERATION ZONE

- INLAND
- COASTAL
- OCEAN



INLAND / COASTAL



INLAND / COASTAL

- UP TO 20 METRE
- DAILY OPERATION

TRAP SETTER
DREDGE
PURSE SEINER
TRAWLER



OCEAN



OCEAN

- UP TO 40 METRE
- OVER 100 GRT

LONGLINER
PURSE SEINER
FREEZER TRAWLER



INDUSTRIAL VESSELS



INDUSTRIAL VESSELS

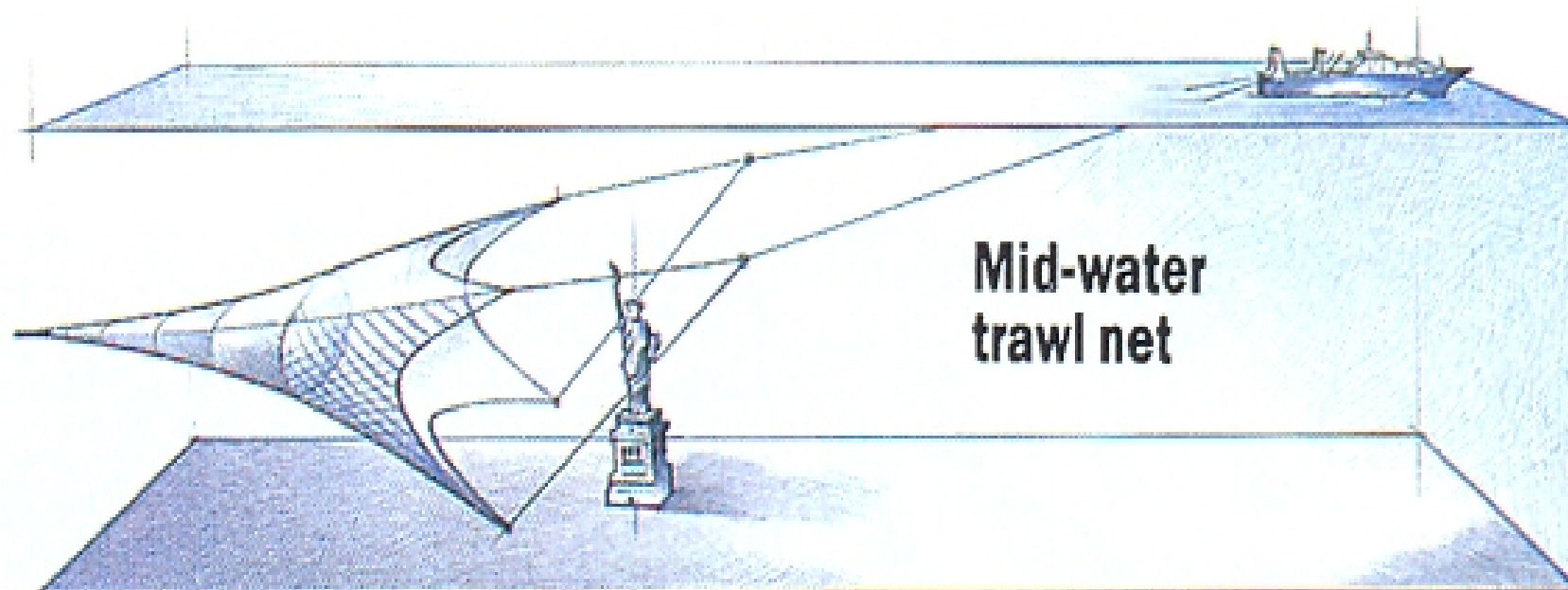
FREEZER TRAWLER

- UP TO 140 M
- UP TO 40 CREW MEMBERS
- UP TO 90 DAY EXPEDITION
- CATCHES AND PROCESSES MORE THAN A TON OF FISH/HOUR



- NET GAPING - 400 FEET AT THE MOUTH

BIG ENOUGH TO SWALLOW THE STATUE OF LIBERTY



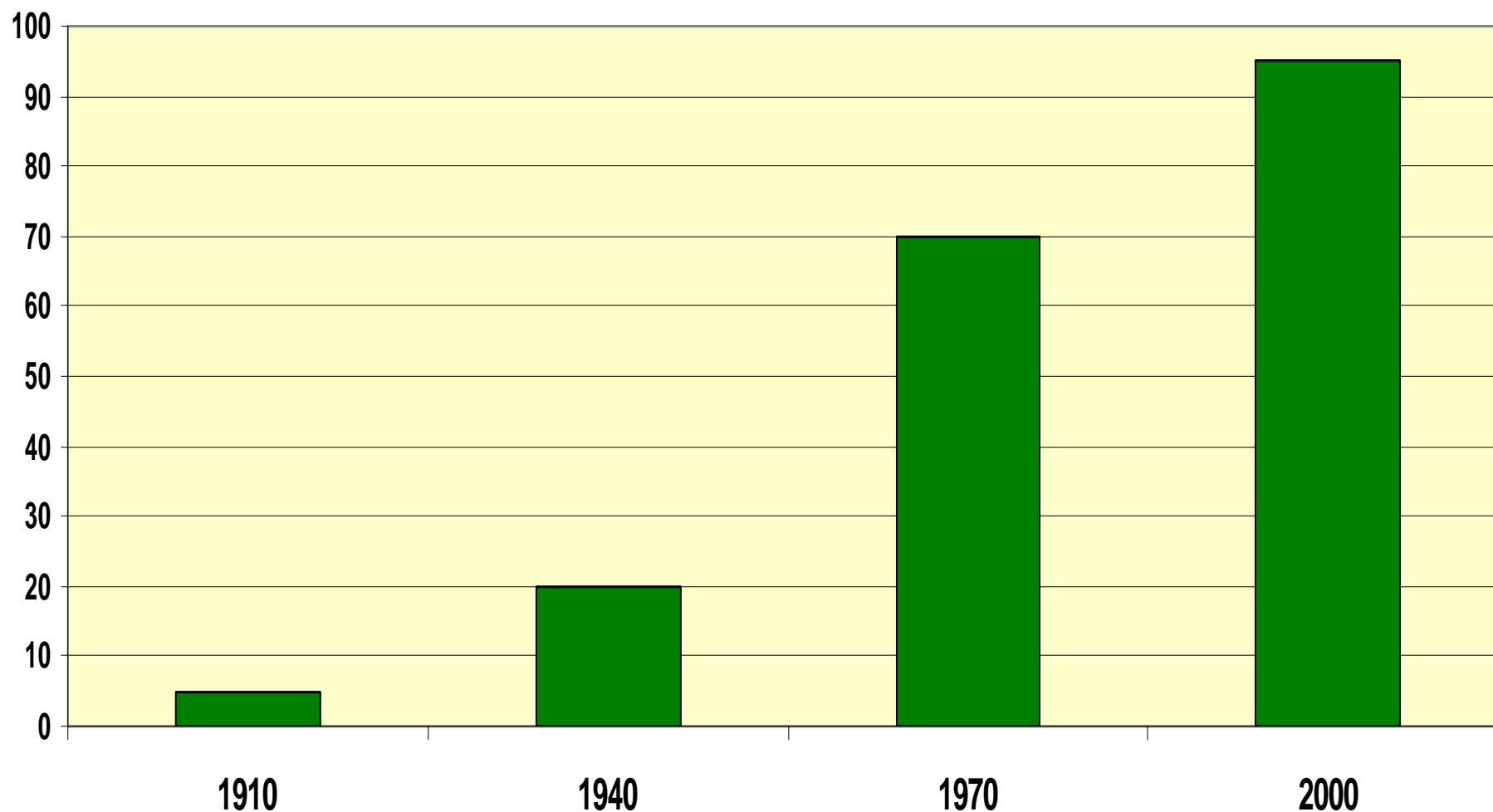
FACTORS INFLUENCING FISHERY

- INCREASE OF FISH DEMAND
- REDUCTION OF THE AVAILABLE FISH STOCKS



TOTAL WORLD CAPTURES

MILLION
TONS



WORLD'S TOTAL CAPTURE



- 2000: **95 MILLION TONS**
70 MILLION TONS FOR HUMAN CONSUMPTION

WORLD AVERAGE FISH CONSUMPTION

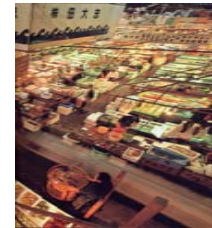


NOWADAYS: **16 KG PER CAPITA**

2030 (PREDICTION): **21 KG PER CAPITA**

ANNUAL AVERAGE FISH CONSUMPTION

- JAPAN: **70 KG PER CAPITA**
- PORTUGAL: **60 KG PER CAPITA**





AVAILABLE FISH STOCKS

(2000 FAO SOURCE)

- **18% FISH STOCKS – OVEREXPLOITED**
- **47% FISH STOCKS - FULLY EXPLOITED**
- **25% FISH STOCKS - UNDEREXPLOITED**

THE DEVELOPMENT OF FISHERY RESULTS IN:

- THE INCREASE OF THE TECHNOLOGICAL COMPONENT
- THE REDUCTION OF CREW MEMBERS
- THE INCREASED VALUE PER VESSEL
- THE DECREASE IN NUMBER OF VESSELS

REDUCTION OF CREW MEMBERS

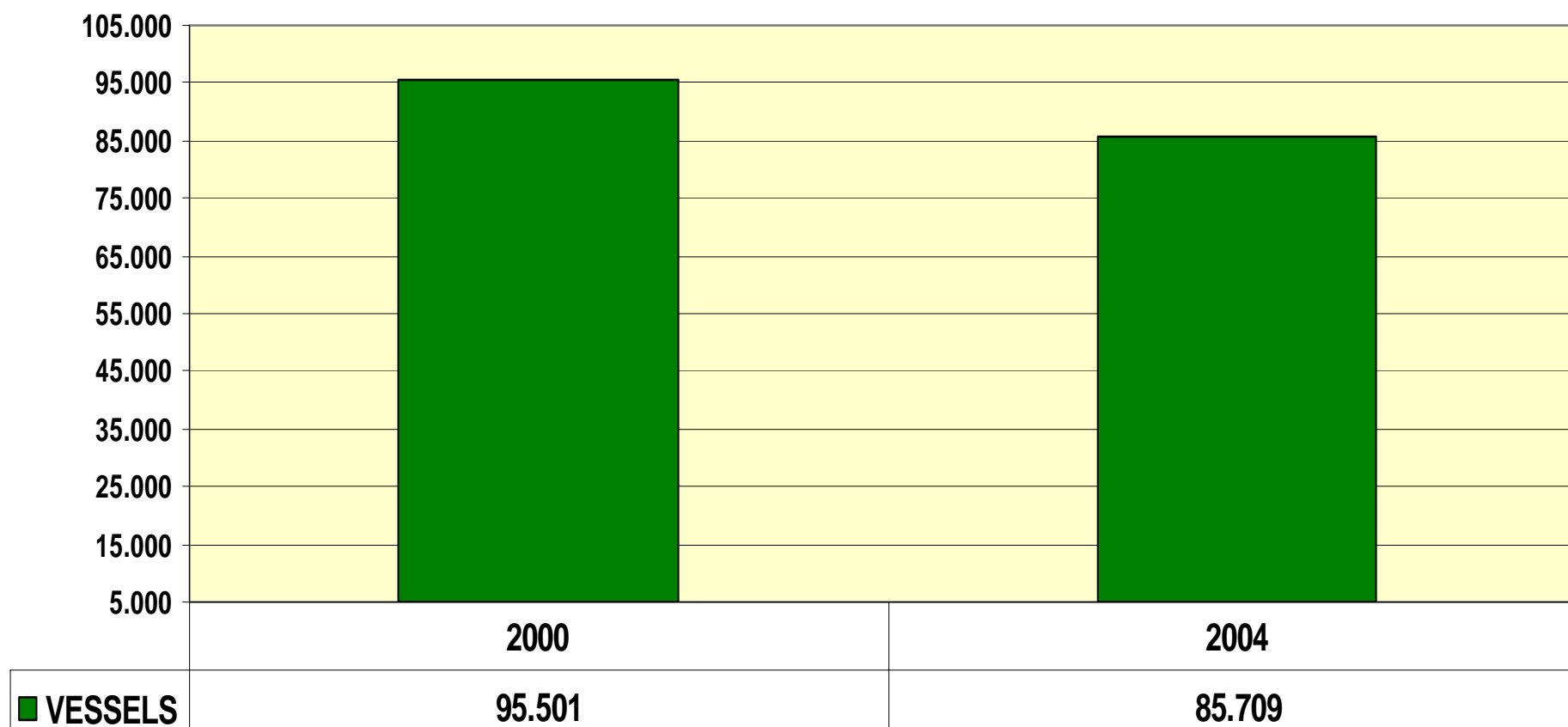
JAPAN

- 1970 – **540.000** people
- 2000 – **260.000** people



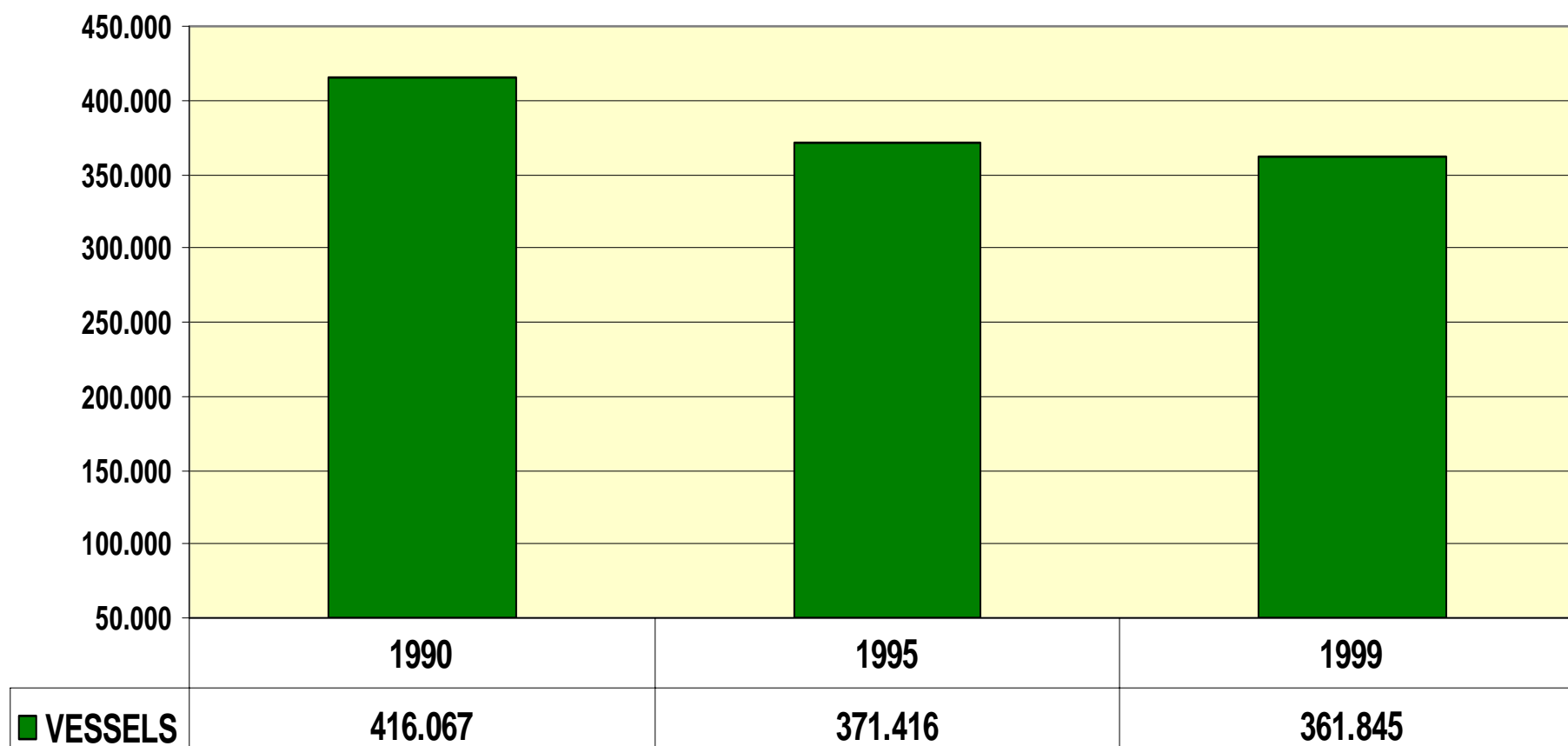
FISHING FLEET

EUROPE (EU 15)



FISHING FLEET

JAPAN



FISHING INDUSTRY INVOLVES:

- VESSEL MANAGEMENT
- CATCHING
- QUOTAS
- LEGISLATION
- REGIONAL AND INTERNATIONAL REGULATIONS
- SUBSIDY POLICIES
- COMMERCIALIZATION

